



## ENERGY MANAGEMENT MADE EASIER

Using energy management software (EMS) brings in savings and increases asset values. It is **the easiest way to:**

- 1 Reduce Energy Usage by 5-10% or More**
  - 3-6 month payback with no capital investment
  - Automatically identifies, quantifies, and tracks savings opportunities
  - Actionable data to optimize building management system, validate capital projects savings, and ensure your savings continue
- 2 Deliver More Value to Owners and Tenants**
  - Owners: Lower energy expenses increase building value
  - Tenants: More efficient buildings are more desirable to lease and have higher tenant satisfaction
  - Stakeholders: Share simple reports documenting savings and sustainability achievements
- 3 Generate Tenant Bills and Energy Reports**
  - Automated tenant billing (get paid faster too)
  - Automated budget and variance reporting
  - Pushed email reports and easy mobile access
  - Sustained NOI based on efficiency improvements

## Optimize Your Building Management System

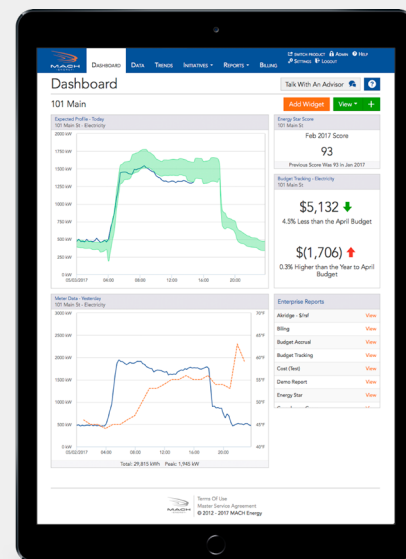
Take the difficulty out of setting your system for the greatest operational efficiency. Use an Energy Management Software like MACH's to help establish the correct daily/weekly/monthly settings. It will easily save for your portfolio and increase NOI.

**Learn more at [machenergy.com](http://machenergy.com). Schedule demonstration by emailing [demo@machenergy.com](mailto:demo@machenergy.com) or by calling +1 (415) 762-0085 x302.**

## MODERN ENERGY MANAGEMENT SOFTWARE

*Easy, actionable energy expense insights help us save hundreds of thousands for tenants and improve their satisfaction.*

– Richard W. Greninger  
Managing Partner, Carr Services



## ENERGY STAR Integration

MACH Energy Software provides complete integration of your energy information with Portfolio Manager, including automated data uploading and score reporting.



# MACH ENERGY

THE BEST  
ENERGY  
MANAGEMENT  
SOFTWARE

## Why Choose MACH's Energy Management Software (EMS)?

By the end of year 2015, MACH Energy's software platform has identified \$60M in savings opportunities, and collectively reduced carbon footprint by 361,000 tons of CO<sub>2</sub>. Commercial real estates leaders repeatedly choose MACH over competitive products. Here are the three most compelling reasons:

### ONLY WITH MACH ENERGY



#### The Highest Value Solution

- Greatest reduction in energy usage with the least effort/investment
- Competitively priced with no capital investment or building set-up fee\*
- By June 2016, identified YTD savings opportunities reaching \$2.8M
- Simple tool to help you improve NOI
- No need to invest in separate system(s). Software supports real-time data, gas, steam, and chilled and domestic water, plus tenant sub-metering



#### The Lowest Risk Option

- Tenant recoverable investment
- Trusted by the best property managers and owners in the business
- Backed by 15-year ENERGY STAR Partner with over 250,000 hours experience lowering energy usage and cost



#### The Quickest System to Implement and Use

- Online in days including training and mobile access
- Automatically identifies and tracks savings and ENERGY STAR opportunities
- Pushed emails for monthly budget/variance report and weekly savings update

*With MACH, we have significantly lowered our energy expenses over the years, as a result of being better informed on energy expenses, and without having to deploy any capital. We get exceptional value from their product, and MACH Energy continues to innovate with new features and capabilities.*

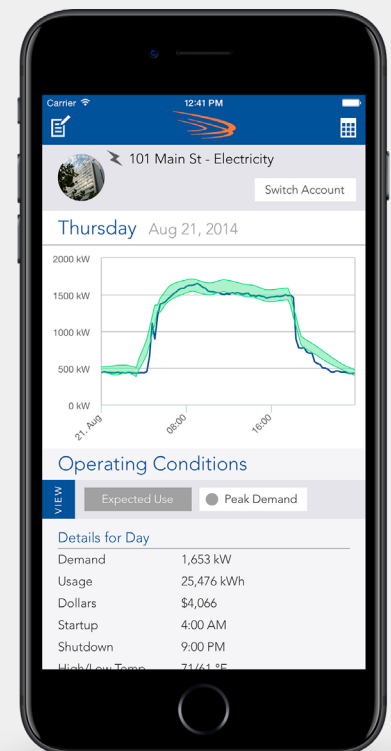
– Craig R. Tagen,

Managing Director, Head of Asset Management,  
Clarion Partners, NYC

Learn more at [machenergy.com](http://machenergy.com). Schedule demonstration by emailing [demo@machenergy.com](mailto:demo@machenergy.com) or by calling +1 (415) 762-0085 x302.

## MACH Energy is the Most Trusted Market Leader

Since 2001 commercial real estate industry leaders including Brookfield Properties, CBRE, Clarion Partners, Lincoln Property, and Principal have selected MACH Energy as the easiest, fastest and most cost effective option for reducing energy-related operating expenses.



\* Some exclusions apply. Building set-up fee is free for select geographic areas only. Buildings not in approved areas can install a real-time connection, or MACH Energy can turn-key it for an additional fee.